

CONCRETE MOISTURE ENCOUNTER X5



The Tramex Concrete Moisture Encounter X5 is a non-destructive digital multi moisture meter for concrete floors and slabs providing instant and precise quantitative measurement of moisture content using Gravimetric testing as a baseline. The CMEX5 also provides Carbide Method equivalent readings for concrete and other cementitious substrates as well as comparative readings as per ASTM F2659. Incorporating plug-in ports for the optional Hygro-i2[®] relative humidity probe testing per ASTM F2170 and heavy-duty pin-type wood probes, this moisture meter transforms into the ideal all-in-one instrument for the flooring professional.



FEATURES



NON-DESTRUCTIVE



ASTM
F2659



IN SITU
RH, T, DP, gr/lb



ASTM
F2170



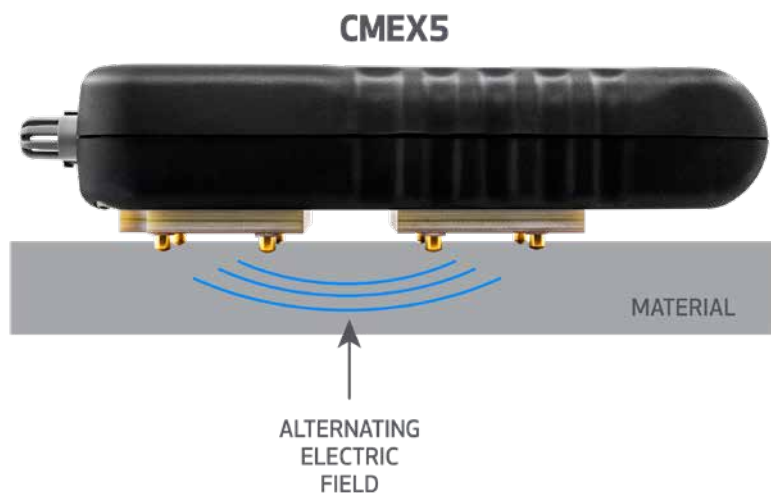
AMBIENT
RH, T, DP, gr/lb



ACCOMPANYING
APP

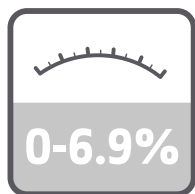
HOW IT WORKS

The Concrete Moisture Encounter X5 detects and evaluates the moisture conditions within the slab or screed by non-destructively measuring the electrical impedance. A low frequency electronic signal is transmitted into the material under test via the electrodes in the base of the instrument. The strength of this signal varies in proportion to the amount of moisture present in the material. The Concrete Moisture Encounter X5 determines the strength of the current and converts this to a moisture content value for concrete slabs and a comparative value for other cementitious floor screeds, displayed on a large clear digital dial.



HYGROMETER MODE

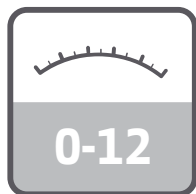
When the optional Tramex Hygro-i2[®] relative humidity probe is plugged into the Concrete Moisture Encounter X5, the instrument automatically changes to Hygrometer Mode, allowing for in situ relative humidity (RH) testing of floor slabs per ASTM F2170 and BS 8201, 8203 Hood Method, as well as ambient conditions of temperature, relative humidity, dew point and mixing ratios. This resilient probe is reusable and can be checked regularly for calibration.



CONCRETE %MC
READING RANGE



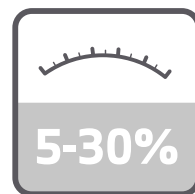
CM EQUIV CONCRETE
READING RANGE



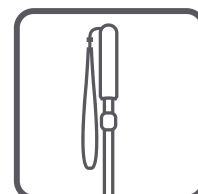
GYPHUM REFERENCE
READING RANGE



CM EQUIV ANHYDRITE
READING RANGE



WOOD %MC
READING RANGE



EXTENSION HANDLE
(optional)

SPECIFICATIONS

Size:	7.1" x 3.4" x 1.6" (180mm x 85mm x 40mm)
Weight:	12.59oz (357g)
Construction:	ABS Body
Power:	2 x AALR6 ALKALINE (included)
Display:	Digital
Depth of penetration in concrete:	approx. 3/4" (20mm)

MEASURING RANGE

Moisture content for Concrete:	0 → 6.9 %
Comparative for Gypsum floor screed:	0 → 12
CM Equiv Anhydrite/Concrete:	0 → 2.7 / 0 → 4.3
Reference scale:	0 → 100
Relative Humidity :	0 → 99%
(with optional Hygro-i2 [®] probe)	
Humidity accuracy: 0% → 99%RH +/- 2% @ 25°C / 77°F	
Moisture content for wood:	5 → 30 %
(with optional wood pin probes)	

Free App Available for Mobile and Tablet:

